

Developed and produced in Switzerland
by Müller Technologie AG



Two-way Unimog U530 for embankment maintenance

- Direction of work – right, with special mower door to view the mower
- Fixed telescopic mowing crane
- Reach of mowing crane from centre of vehicle - 7.5 m
- Suction mower, mowing width 1200 mm
- Powerful blower for moving cuttings
- Two-way mower trailer with 28 m³ capacity
- Three-way tipper with ball connection and lift-out device for use of various superstructures
- Removable collection container
- Each axle with service and spring-operated parking brake
- Track wheels interchangeable, standard and metre gauge
- Road wheels raised when travelling on track, class 9A
- Further working equipment can be attached via quick release mechanism
- Optional ecological mower possible

Cover picture

Unimog U530, conversion to two-way vehicle
for Müller Gleisbau AG for embankment maintenance on rail
and road.

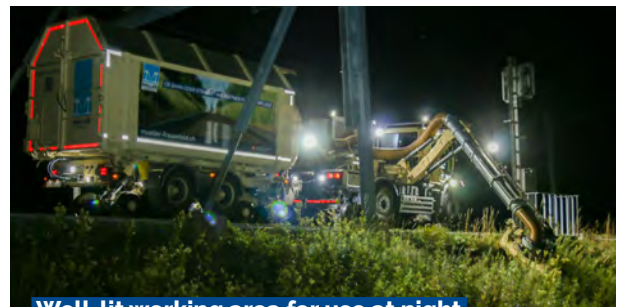


Technical data

Manufacturer	Müller Technologie AG
Motor power	260 kW
Length	7.2 m
Width	2.3 m
Height	2.9 m
Unimog operating weight	16.5 t
Trailer payload	max. 9 t
Usable trailer volume	28 m ³
Total weight	34.5 t
Max. speed - road	80 km/h
Max. speed - rail	20 km/h or 40 km/h
Smallest curve radius	42 m
Track width	1000 mm or 1435 mm
Max. gradient	60 ‰



Fixed mowing crane with a reach of 7.5 m



Well-lit working area for use at night



Workspace on the right with special door for optimal view



Collection tank can be tilted and removed, with a capacity of 28 m³



Patrick Willi
Product manager
Special vehicles railway technology

Phone +41 52 557 92 87
p.willi@mueller-technologie.ch

Your contact

Müller Technologie AG

a subsidiary of
Müller Frauenfeld AG
Langfeldstrasse 94
8500 Frauenfeld

www.mueller-frauenfeld.ch